

july 2025 PC update



## **Chester villages and Gowy Police Update – July 25**

**Keep in touch**

**PCSO Netherton – [Deborah.netherton@cheshire.police.uk](mailto:Deborah.netherton@cheshire.police.uk)**

**PC Harrison - [Steve.Harrison@cheshire.police.uk](mailto:Steve.Harrison@cheshire.police.uk)**

**between the 1/07/25 and 30/07/25 Incidents and Crime committed**

**The update will include information relevant to the residents.**

| Offence              | number |
|----------------------|--------|
| Theft from a vehicle | 4      |
| Highways disruption  | 15     |
| Concern for safety   | 9      |
| Missing person       | 6      |
| Burglary dwelling    |        |
| Theft                | 2      |
| Drugs                |        |
| Suspicious person    | 8      |
| wildlife             |        |
| Criminal damage      | 1      |
| Personal nuisance    | 1      |

- *Sample of incidents from the Chester villages Gowy, data for crime available on the Cheshire Constabulary website*
- <https://www.cheshire.police.uk/a/your-area/cheshire/cheshire-west-and-chester/kingsley-and-gowy/>

**Residents are encouraged to look at their home security.**

For advice visit our Cheshire Police website -

<https://www.cheshire.police.uk/cp/crime-prevention/residential-burglary/>

**Please use 101 or Cheshire Police website to report any incidents. 999 in an emergency.**

### **Community Engagement:**

PCSO Netherton would like to share with you an update for Chester villages and Gowy for June/july 2025, we have been busy with youth engagements both with colleagues and other agencies this will continue over the summer months.

All PCSO's have been involved very young people, teenagers, and families in a positive setting. Throughout the summer we have had 'Op Revision' which will be a combination of patrols in public spaces, parks, open water areas, we will return repeat ASB locations to ensure we are available visible presence to the public. This operation is to provide reassurance to the community and gives us a chance to talk to lots of young people.

As part of Op revision, I have visited several parks, Waverton, Christleton, Barrow, Ashton Hayes, Mickle Trafford all have been in order and we have had no reports of ASB.

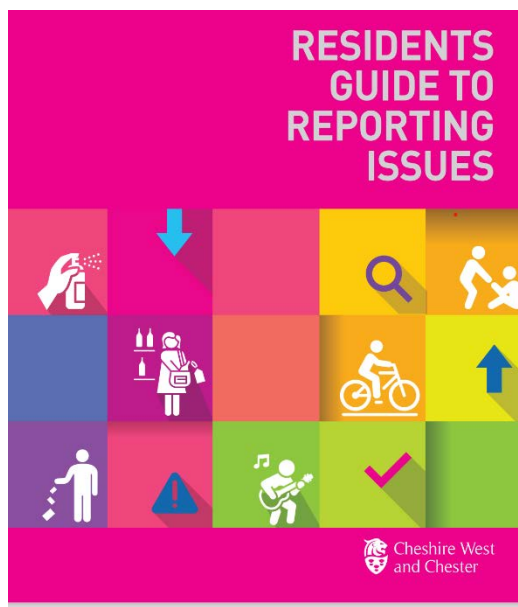
I have had a few reports of issues with neighbour disputes over Gardening issues such as pruning trees/plants, fencing being replaced, noise, Fires etc,

these are generally civil issues most can be sorted by communication with your Neighbours/ land owner, you can look the civil law online or contact the CWAC who have plenty of pointers on there website.

We had several theft from motor vehicles these have been targeted at vulnerable vehicles that have been in isolated areas/car parks overnight, please lock vehicles and ensure you empty them of any valuables.

Please continue to report any suspicious behaviours as it does help us build a picture of any potential criminal behaviours that might be taking place.

### [Residents Guide to Reporting Issues](#)



The link will take you to a guide to reporting different issues to the council.

We continue to offer you the chance for you to give your views through



‘Residents Voice’ QR code which is available in different locations in the villages shops etc or on cheshire constabulary website, This is your platform to put forward your views about the Cheshire Constabulary Services, how we may make improvements, voice your concerns, and comments on over services.

Please choose Chester the area of which you live , which will be Kingsley or Gowy and Chester villages.

Thanks

## Roadsafety

The speed device has been out in several areas Barrow, Ashton Hayes, Mickle Trafford and Wimbolds Trafford, any drivers caught speeding were dealt with by the central ticket office.

I have given passing attention to areas where there have been reports of parking issues advisory notices have been placed on offending vehicles.

Parking is a ongoing issue in several villages, we will continue to monitor the areas and give advisory notices where needed.

Parking issues can be looked at by CWAC [Residents Guide to Reporting Issues](#)

[Waiting and parking \(238 to 252\) - The Highway Code - Guidance - GOV.UK \(www.gov.uk\)](#)



## Surgery Dates

I will be trying out some pop up surgeries in different areas.

(PLEASE can these be advertised on Village website as they are aimed for public attendance?)

**Thursday 14<sup>th</sup> August, Dunham on the hill. Outside The Boshaw Community Centre,. 10:00 to 10:40 hours**

**Wednesday 20<sup>th</sup> August at Guilden Sutton shops, 1600 hours to 1645 hours.**

**Thursday 28<sup>th</sup> August at Christleton Methodist Church, The Square in the car park 1700 to 17.40 hours**